

CIPHER LAB
Smarter



RK95

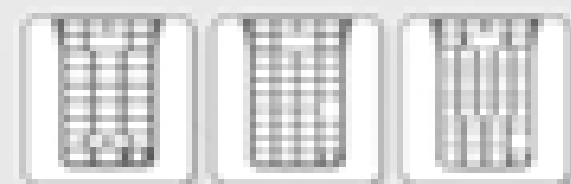
series



Android Operation Brings the Next Generation of Productivity and Efficiency

Visible LED indicators represent scanning result status, wireless connection, charging level and more.

4.3" touch display ensures readability and future adoption of touch-based applications.



29/38/52 keypad options. Terminal Emulation keypads support TN and VT systems.



Optional 13 MP camera embedded with specific angle to prevent it from being blocked by user's hand while gripping pistol or taking photos.

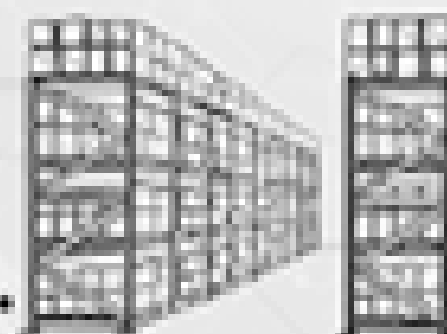


2x2 MU-MIMO technology with increased data capacity and transmission speed.

Versatile reader options of laser, 2D imager, mid-range 2D imager, and extended-range 2D imager fulfill different user demands in reading distance.



Maximum long distance barcode reading over 21 meters



In-house curved shape makes it easy to grip.



Lightweight and pistol designs to guarantee all-day comfortability.



Two battery options with hot-swappable and easy-removable features allow one-hand operation.



Operation temperature down to -30°C



✓ Comes with temperature sensor and heater control software allows user to automatically turn on/off heater based on surrounding environment. For example, set to turn on heater under -10°C and turn off above 20°C.

✓ Heaters embedded in touch screen and scan window to ensure fog-free display and frost-free scanning.

✓ Ice-resistant materials built into the product itself to prevent potential damage caused by prolonged operation in low temperature environments.

✓ Freezer 4,300 mAh battery optimized for low temperature environment, min. 7 working hours at -30°C.



Android Operation Brings the Next Generation of Productivity and Efficiency

CipherLab's R305, the next generation of the R700, brings the productivity and efficiency to the next level. Its advanced mobile computing platform and superior wireless options extend performance in the warehouse environment. With the latest Android operating system, the R305 has fulfilled larger data collection with multiple keypad options and intensive scanning usage with versatile reader options. It not only fulfills traditional users' legacy warehouse applications but also new applications from indoors to outdoors.

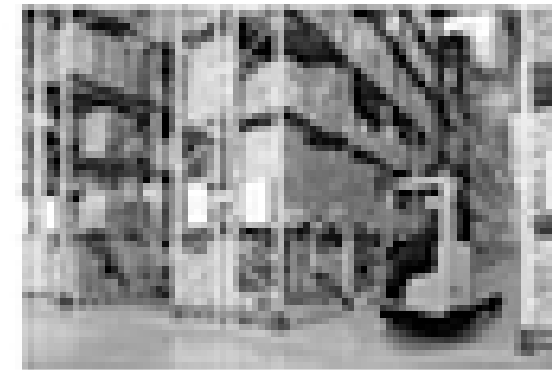
Accurate and Upgraded Features with Google Certification

CipherLab sets a 2-year lifecycle record for step up for the collection gear in the warehouse environment. This promising 2-year life and support is powered by Google's Android operating system and physical input devices designed for use in rugged and wear cases. Along with Google certification, the R305 is powered by Intel's latest mobile processor and battery operation. Superior performance, rugged design and advanced connectivity are all provided with the R305. R305 supports two applications from indoor to out, its powerful and applicable mobile computing platform works with both bar code and image with mobile keypad and versatile data option, the R305 is truly an investment for a smart and cost-effective for your business.



Superior Performance with Advanced Certified Mobile Computer Platform

CipherLab R305 is powered by the Cortex-A15 processor with 4 GB RAM and 16 GB flash memory. You will see process the data in an instant without any interruptions. Moreover, its latest Android 7.0 operating system is upgradeable to one later version. The R305's intuitive interface allows you staff to have less training and access the most up-to-date Android applications. It is also certified by Google's OMA and AOSP programs to ensure applications operate smoothly with elevated standards. Regular security updates are guaranteed for five years after its launch. Seamless connectivity with AOSP makes large scale Android deployment across multiple device simple.



Resourceful Data Capture

CipherLab R305's versatile reader options, laser, 2D image and range 2D image and hybrid range 2D image, give you long distance barcode reading capabilities from 7.2m to over 21.4 meters. The R305 has the same great mobility of the R700 series for easy field replacement and on-site service. Additionally, it has the new LED indicator for good or bad scanning. Workers can also capture detailed photos for records of the cargo condition and the verification process with its optional 1.3 MP camera. R305's NFC ability, available on request, helps to read NFC smart tags or emulate contactless cards for access control.



Reliable Transmission Increases Workforce Productivity

The R305's reliable transmission include IEEE802.11 a/b/g/n of dual band and MIMO 2x2 technology with MIMO 2x2, the R305 offers superior Wi-Fi coverage and high-speed data throughput that keeps multiple workers connected simultaneously with the ability to fast roaming in 1 seconds and reconnection in 1 seconds, the R305 can handle big data transmission without disturbances. Workers can enjoy a more reliable wireless network regardless of location without interference. The expandability of the optional R305E connectivity provides workers with reliable enhanced usage outside the four walls for warehouse storage, yard management and whole logistic operations. It also allows workers to upload and download data with location based applications such as proof of delivery and optimal route planning.



Easy Data Collection with Modernized Terminal Emulation and Physical Keypads

CipherLab R305 provides a 38-key numeric and 10-key alphanumeric physical keypad option with CipherLab Terminal Emulation compatible with VT and PT systems. Additionally, the R305's touchless operation can also support Android intuitive and interactive applications. Its simple simplicity with your choice of keypad or touch input for Terminal Emulation/Android Apps now or in the future. The R305's 4.3 inch WVGA display also increases the readability and viewing area for your staff. It provides the best-in-class readability, visibility and data input flexibility. Users can interact with the screen, regardless of the display's use, with a finger, glove or a stylus.

Durable Designs that Outlast a Full Shift

The CipherLab R305's IP65 rating, 1.8 m drop resistance and 1,000 bumps at 1 m falls support productivity with full protection from water, dust and accidental drops. Workers can feel assured when they work, knowing R305's Corning Gorilla Glass improves damage resistance and toughness against slips and scratches. The keypad, with quality printing, also passed a durability test of 1 million presses. The R305 can even extend its productivity into the cold storage or freezer and prevent device condensation. Along with all that durability, workers can operate for more than 8 working hours with the interchangeable 2,000 mAh or 3,000 mAh battery, and more than 7 working hours with faster battery.



Elaborate Utilities and Software Solutions



CipherLab R305 supports more than just 3rd party software. It also supports CipherLab self-developed software utilities to boost your operation.

- ✓ With CipherLab **BaristaCloud**, certified by Google Total Enterprise Mobility Management, provides solution to manage CipherLab's Android devices via mobile engine and engine. Supported by Google Data-work analytics, BaristaCloud allows administrators to track, monitor and manage applications from a central administrative area.
- ✓ CipherLab **Terminal Emulation** supports systems of VT, TNC200 and TNC200 with full screen operation for efficient inventory management with intuitive user interface, Wi-Fi status, battery capacity and system functionality, your business will undoubtedly save time and energy. Additionally, the **Button Assignment** which allows function key configuration will speed up the work process.
- ✓ CipherLab **ADC (Android Device Configuration)** makes customized configuration and project setting easy for administrators. These configuration utilities can perform system over USB connection or WLAN or Cellular Mobile Deployment System. Through **Barcode Scanning**, you could even configure mobile settings by scanning 1D/2D barcode.

